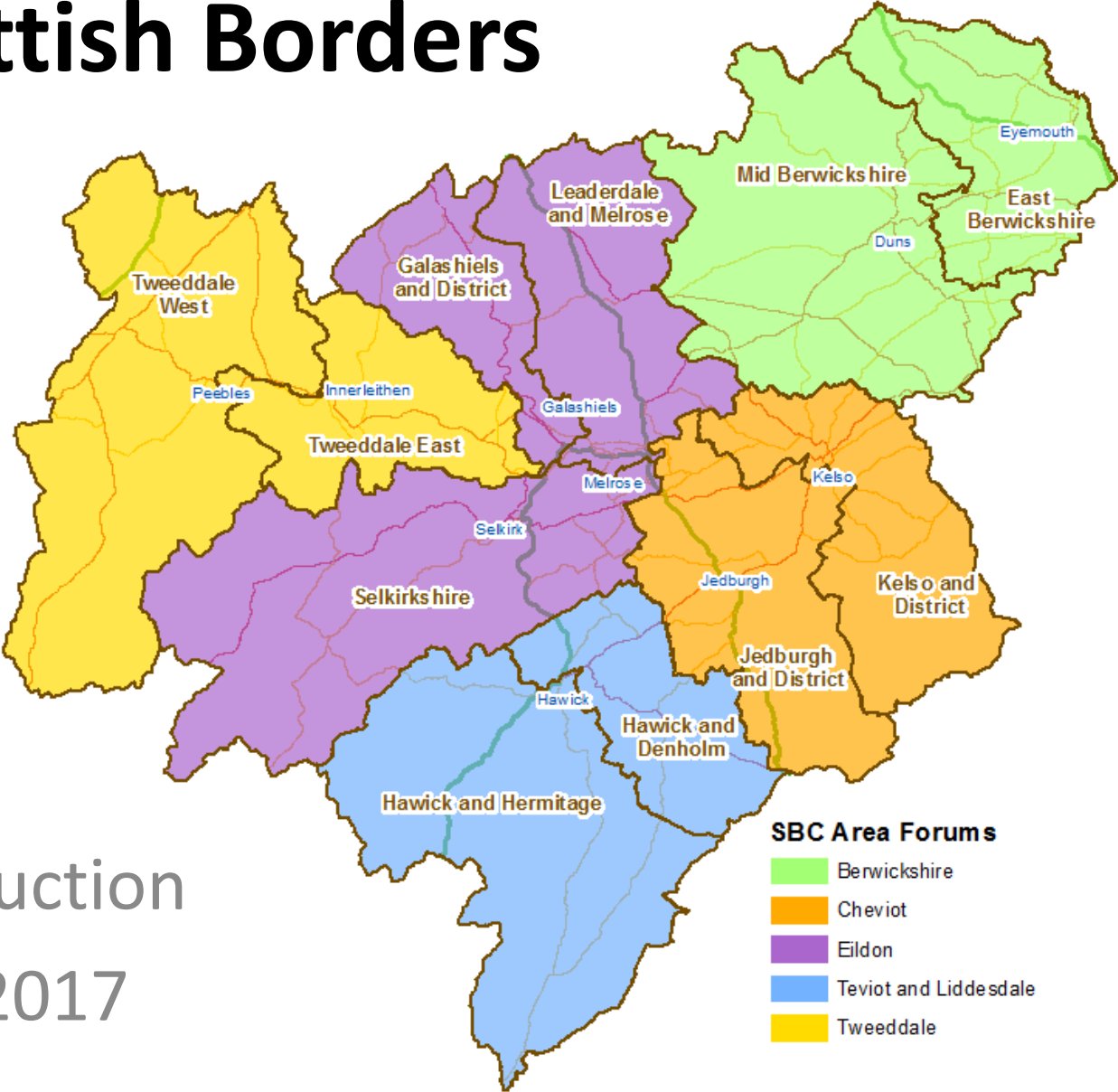


The Scottish Borders



An Introduction
March 2017

2015 Population

Area Forum / Ward	Children	Working Age	Pension Age	Total Population	% Children	% Working Age	% Pension Age
Berwickshire	3,332	12,268	5,227	20,827	16%	59%	25%
East Berwickshire	1,745	6,243	2,603	10,591	16%	59%	25%
Mid Berwickshire	1,587	6,025	2,624	10,236	16%	59%	26%
Cheviot	2,987	11,273	5,254	19,514	15%	58%	27%
Jedburgh and District	1,419	5,384	2,394	9,197	15%	59%	26%
Kelso and District	1,568	5,889	2,860	10,317	15%	57%	28%
Eildon	5,968	21,718	7,349	35,035	17%	62%	21%
Galashiels and District	2,419	9,555	2,658	14,632	17%	65%	18%
Leaderdale and Melrose	2,046	6,439	2,294	10,779	19%	60%	21%
Selkirkshire	1,503	5,724	2,397	9,624	16%	59%	25%
Teviot and Liddesdale	2,824	10,566	4,416	17,806	16%	59%	25%
Hawick and Denholm	1,665	5,503	2,117	9,285	18%	59%	23%
Hawick and Hermitage	1,159	5,063	2,299	8,521	14%	59%	27%
Tweeddale	3,864	12,482	4,502	20,848	19%	60%	22%
Tweeddale East	2,107	6,343	2,355	10,805	20%	59%	22%
Tweeddale West	1,757	6,139	2,147	10,043	17%	61%	21%
Grand Total	18,975	68,307	26,748	114,030	17%	60%	23%

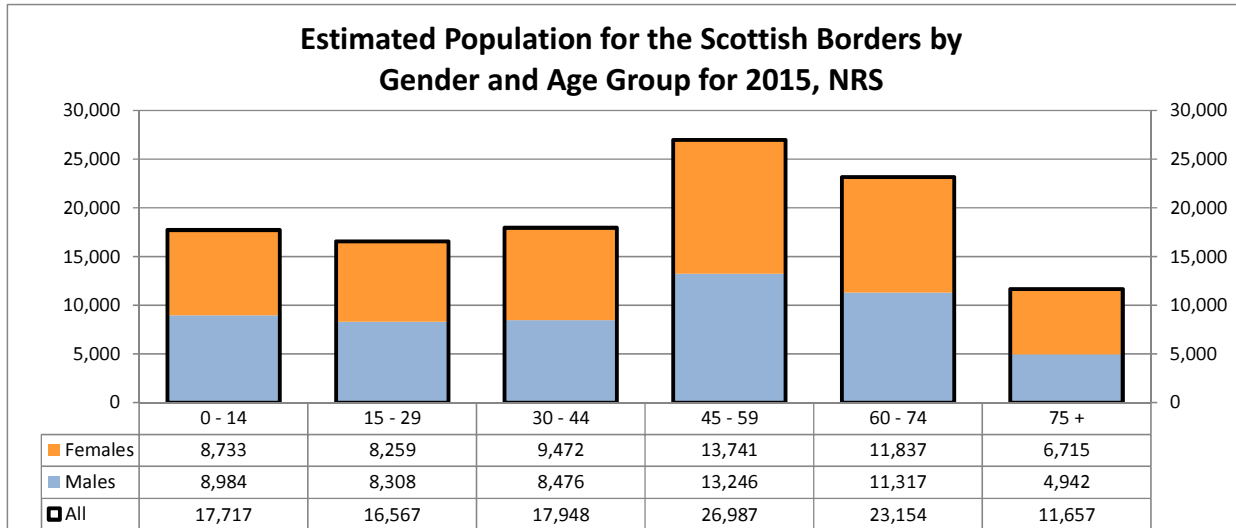
Data Zone Name	Children	Working Age	Pension Age	Total Population	% Children	% Working Age	% Pension Age
Bonchester Bridge and Chesters Area	83	421	233	737	11.3%	57.1%	31.6%
Denholm	87	349	205	641	13.6%	54.4%	32.0%
Hawick - Burnfoot - Central	220	447	98	765	28.8%	58.4%	12.8%
Hawick - Burnfoot - North	275	516	63	854	32.2%	60.4%	7.4%
Hawick - Burnfoot - South East	152	438	153	743	20.5%	59.0%	20.6%
Hawick - Burnfoot - West	138	373	106	617	22.4%	60.5%	17.2%
Hawick Central - Drumlanrig	161	582	249	992	16.2%	58.7%	25.1%
Hawick Central - Millers Knowes	113	515	234	862	13.1%	59.7%	27.1%
Hawick Central - Town Centre	81	457	221	759	10.7%	60.2%	29.1%
Hawick Central - Trinity	81	385	172	638	12.7%	60.3%	27.0%
Hawick Central - Weensland	137	528	242	907	15.1%	58.2%	26.7%
Hawick Central - Wellogate	117	598	218	933	12.5%	64.1%	23.4%
Hawick North - Commercial Road	93	432	194	719	12.9%	60.1%	27.0%
Hawick North - Silverbuthall	153	549	175	877	17.4%	62.6%	20.0%
Hawick North - Stirtches	168	579	173	920	18.3%	62.9%	18.8%
Hawick North - Wilton Hill	139	579	238	956	14.5%	60.6%	24.9%
Hawick West End - Crumhaugh	98	527	301	926	10.6%	56.9%	32.5%
Hawick West End - Crumhaughill and Parkdail	145	475	217	837	17.3%	56.8%	25.9%
Hawick West End - Wilton Dean	60	304	219	583	10.3%	52.1%	37.6%
Minto Cauldmill and Boonraw Area	97	516	260	873	11.1%	59.1%	29.8%
Newcastleton	103	430	231	764	13.5%	56.3%	30.2%
Teviothead and Hermitage Area	123	566	214	903	13.6%	62.7%	23.7%
Teviot and Liddesdale	2824	10566	4416	17806	15.9%	59.3%	24.8%

Themes



Theme	No.	National Outcome Description
Demographic and Household Profile	0	Population and Household Profile with Deprivation 'baseline' SIMD2012
Economy and Income	1	We live in a Scotland that is the most attractive place to do business in Europe
	2	We realise our full economic potential with more and better employment opportunities for our people
Education and Learning	3	We are better educated, more skilled and more successful, renowned for our research and innovation
	4	Our young people are successful learners, confident individuals, effective contributors and responsible citizens
Life Stages / Health and Wellbeing	5	Our children have the best start in life and are ready to succeed
	6	We live longer, healthier lives
	7	We have tackled the significant inequalities in Scottish society
	8	We have improved the life chances for young people and families at risk
	15	Our people are able to maintain their independence as they get older and are able to access appropriate support when they need it
Community and Environment	9	We live our lives safe from crime, disorder and danger
	10	We live in well-designed, sustainable places where we are able to access amenities and services we need
	11	We have strong, resilient and supportive communities where people take responsibility for their own actions and how they affect others
	12	We value and enjoy our built and natural environment and protect and enhance it for future generations
	13	We take pride in a strong, fair and inclusive national identity (Local identity)
	14	We reduce the local and global environmental impact of our consumption and production
Public Services	16	Our public services are high quality, continually improving, efficient and responsive to local people's needs

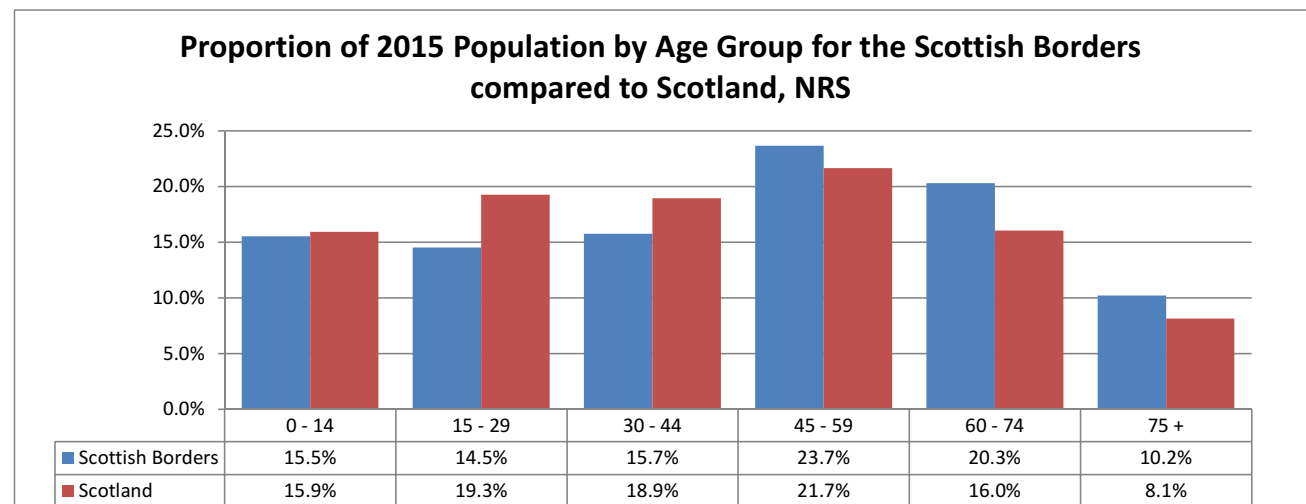
Scottish Borders Population



- 2015 Population : 114,030
- 51.5% Female
- 48.5% Male

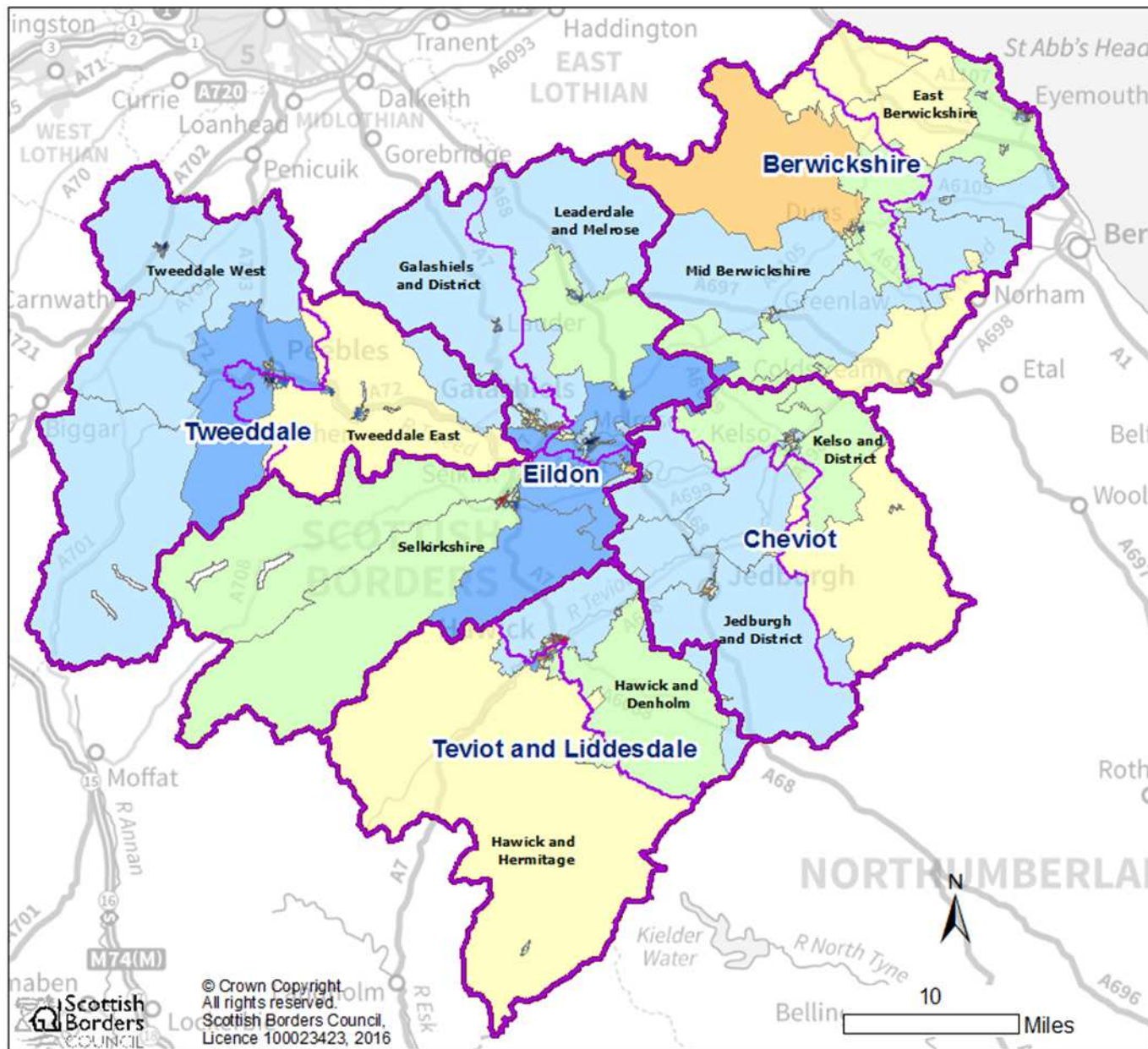
Aged 60+

- Scottish Borders: 30.5%
- Scotland: 24.2%

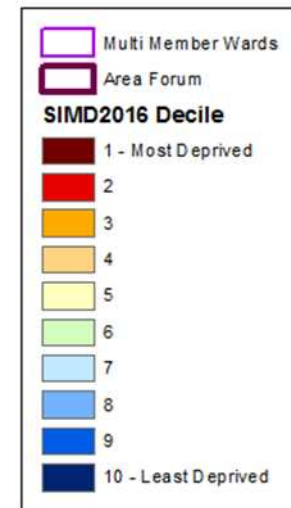


Measuring Deprivation

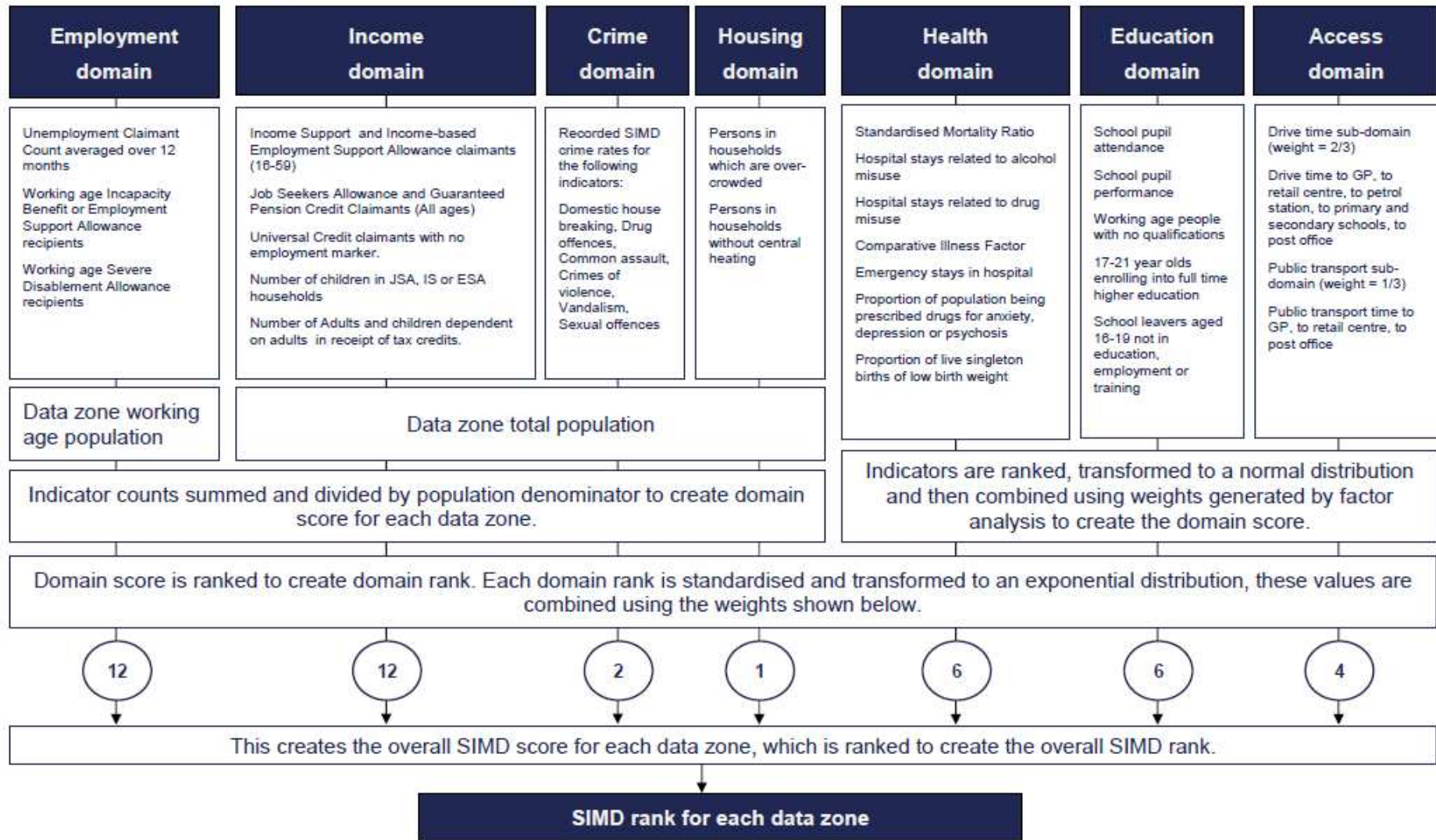
- The Scottish Index of Multiple Deprivation (SIMD) is the official tool for finding the most deprived areas in Scotland.
<http://www.gov.scot/Topics/Statistics/SIMD>
- 28 indicators across 7 SIMD Domains: Employment, Income, Education, Health, Access, Crime and Housing
- Of 143 areas in the Scottish Borders, that are used to measure the SIMD, 1.4% are in the most deprived 10% of Scotland.



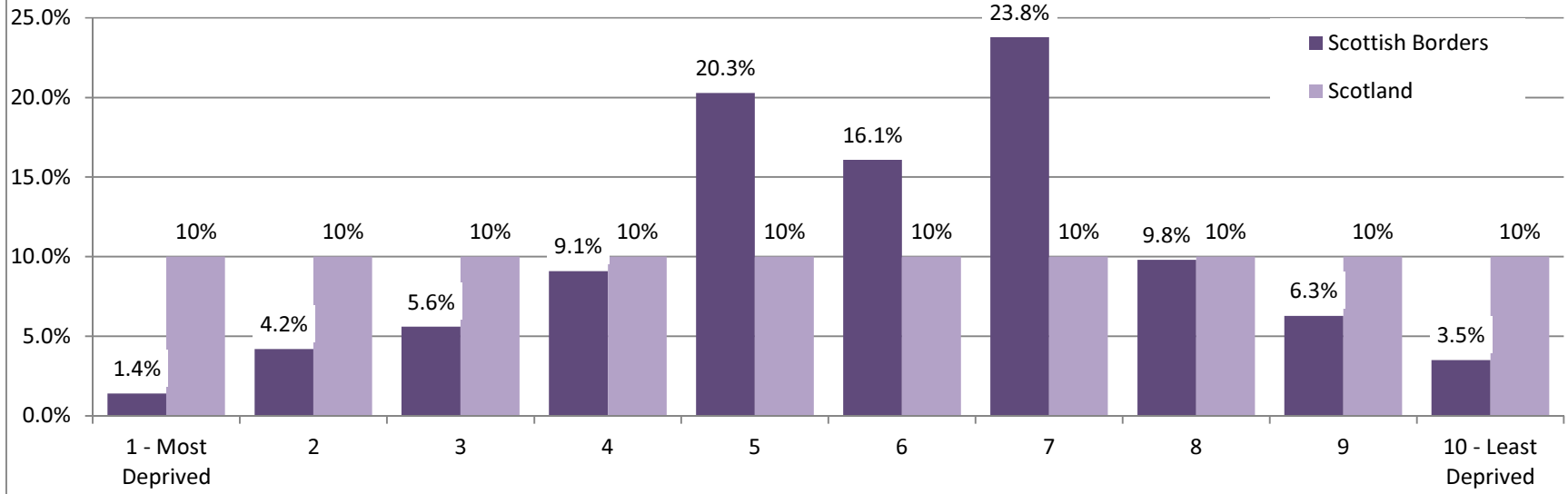
**Scottish Borders
Area Forum and
Multi Member Wards
with SIMD2016
Deciles**



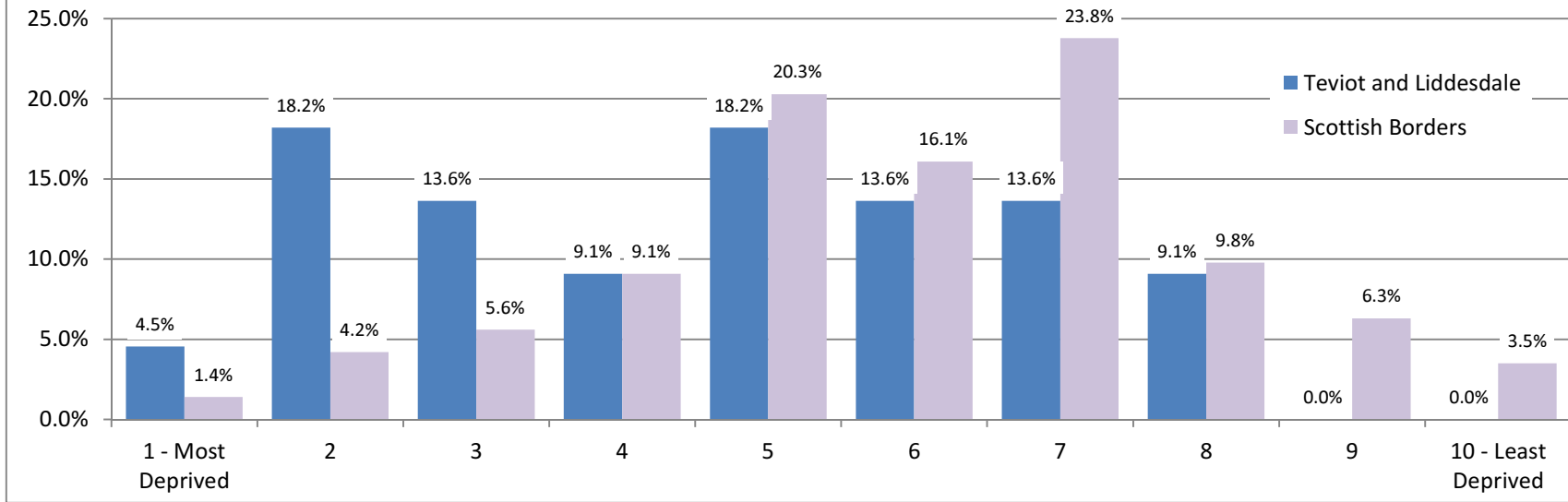
SIMD16 Methodology



Percent Datazones by SIMD2016 Decile: Scottish Borders vs. Scotland



Percent of Datazones by SIMD2016 Decile: Teviot and Liddesdale vs. Scottish Borders



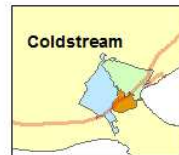
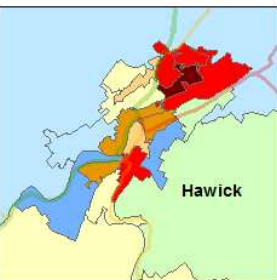
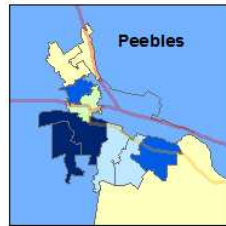
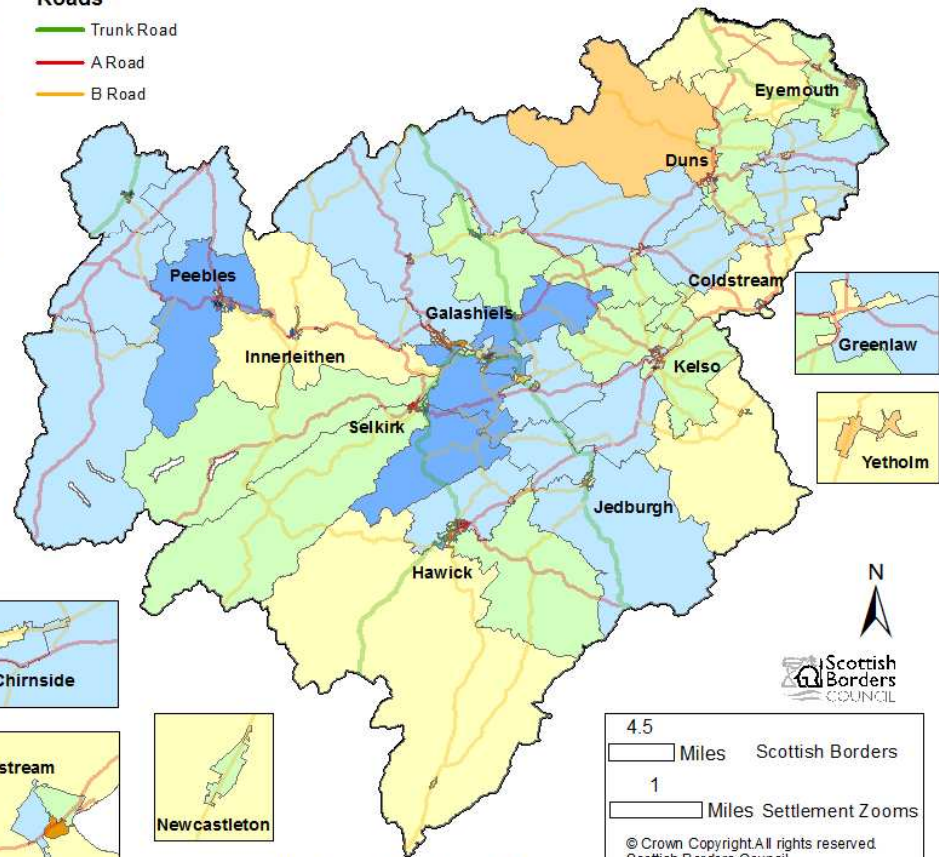
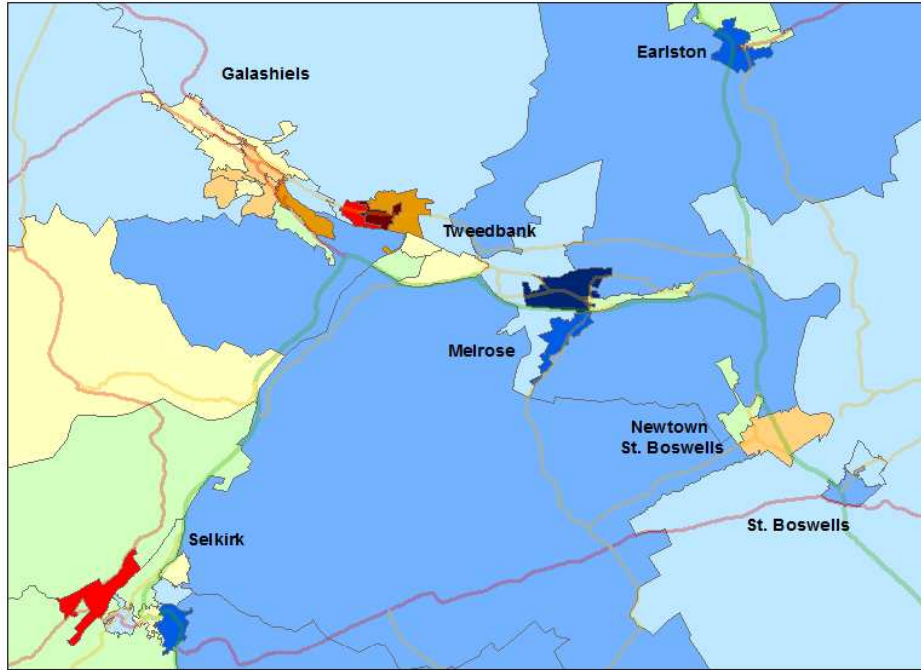
SIMD2016 for Scottish Borders Datzones

Scottish Index of Multiple Deprivation 2016: Deciles

- 1 - Amongst the most deprived 10% in Scotland (2)
- 2 - Most deprived 20% (6)
- 3 - Most deprived 30% (8)
- 4 - Most deprived 40% (13)
- 5 - Middle decile (29)
- 6 - Middle decile (23)
- 7 - Least deprived 40% (34)
- 8 - Least deprived 30% (14)
- 9 - Least deprived 20% (9)
- 10 - Amongst the least deprived 10% in Scotland (5)

Roads

- Trunk Road
- A Road
- B Road



4.5 Miles Scottish Borders

1 Miles Settlement Zooms

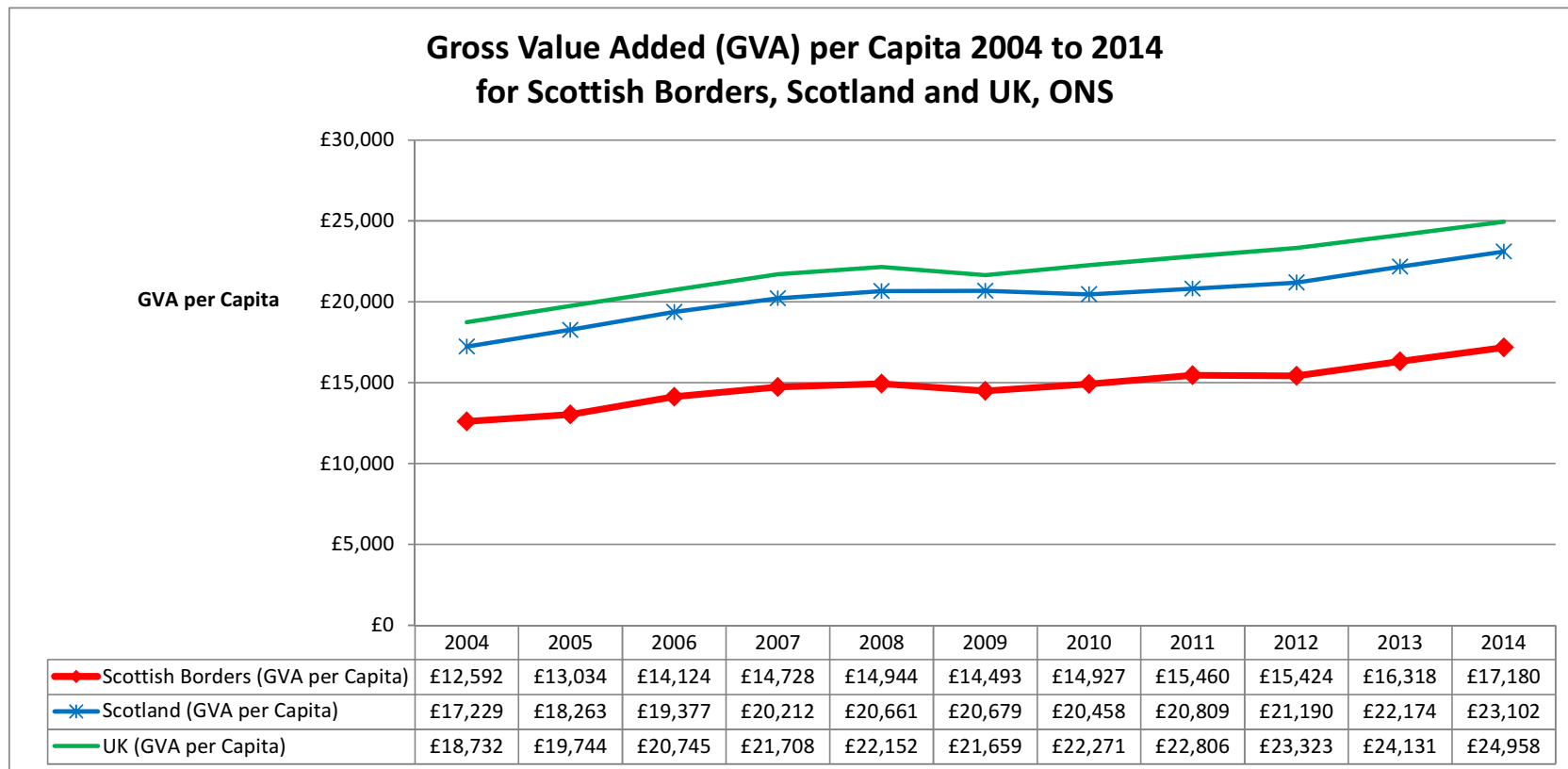
© Crown Copyright All rights reserved.
 Scottish Borders Council,
 Licence 100023423, 2016

The number in the () is the number of the 143 datzones (2011 based) in the group.

Data Zone Name / SIMD2016	Overall Decile	Income decile	Employment decile	Health decile	Education decile	Housing decile	Access decile	Crime decile
Bonchester Bridge and Chesters Area	6	7	8	6	9	9	1	10
Denholm	7	6	7	8	6	7	7	10
Hawick - Burnfoot - Central	1	1	2	1	1	2	3	2
Hawick - Burnfoot - North	2	1	2	2	1	4	3	2
Hawick - Burnfoot - South East	2	2	2	2	1	5	3	2
Hawick - Burnfoot - West	2	2	2	2	1	4	2	4
Hawick Central - Drumlanrig	5	5	5	4	5	8	4	6
Hawick Central - Millers Knowes	8	8	6	7	6	9	6	7
Hawick Central - Town Centre	4	4	3	4	4	6	10	2
Hawick Central - Trinity	3	4	3	4	5	4	8	2
Hawick Central - Weensland	6	6	6	6	6	9	4	6
Hawick Central - Wellogate	2	3	1	2	3	5	9	2
Hawick North - Commercial Road	3	3	2	3	3	6	8	3
Hawick North - Silverbuthall	4	4	3	4	5	8	3	6
Hawick North - Stirtches	5	6	6	4	5	8	2	8
Hawick North - Wilton Hill	5	5	3	5	6	8	4	6
Hawick West End - Crumhaugh	3	3	3	2	4	7	8	4
Hawick West End - Crumhaughill and Parkdaill	8	8	6	7	7	8	5	7
Hawick West End - Wilton Dean	7	7	6	7	8	9	2	8
Minto Cauldmill and Boonraw Area	7	8	9	7	8	10	1	9
Newcastleton	6	5	4	8	6	9	10	7
Teviothead and Hermitage Area	5	5	6	7	7	7	1	7

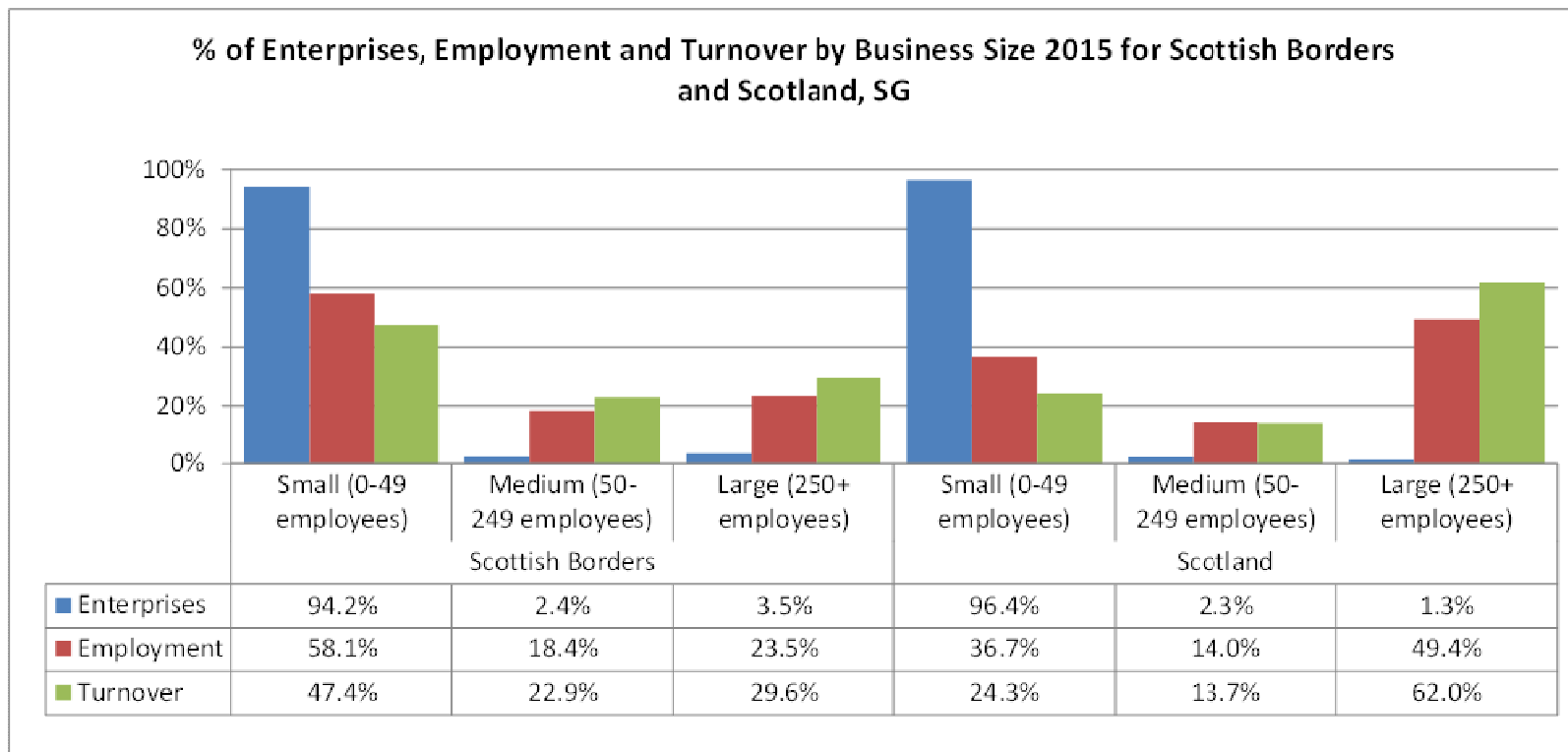
Economy and Income: Findings

- Gross Value Added per capita lower in the Scottish Borders compared to Scotland and the UK, but slightly better growth.



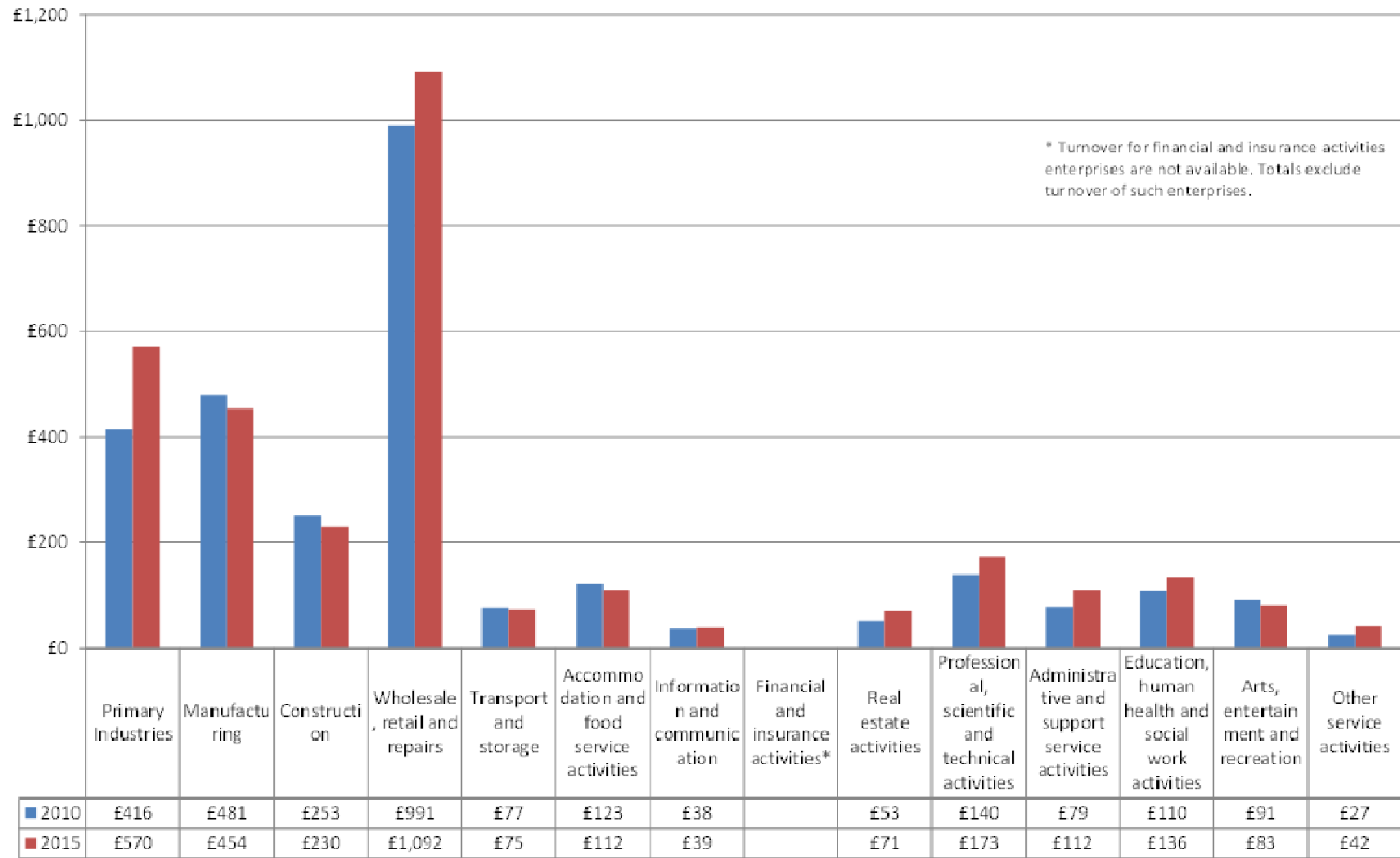
Economy and Income: Findings

- Between 2010 and 2015 the Scottish Borders economic turnover increased by £313 million a 10.9% increase above the 1.3% increase for Scotland. (Note this excludes financial and insurance enterprises)
- Scottish Borders has more small enterprises and they contribute to more of the turnover relative to Scotland.

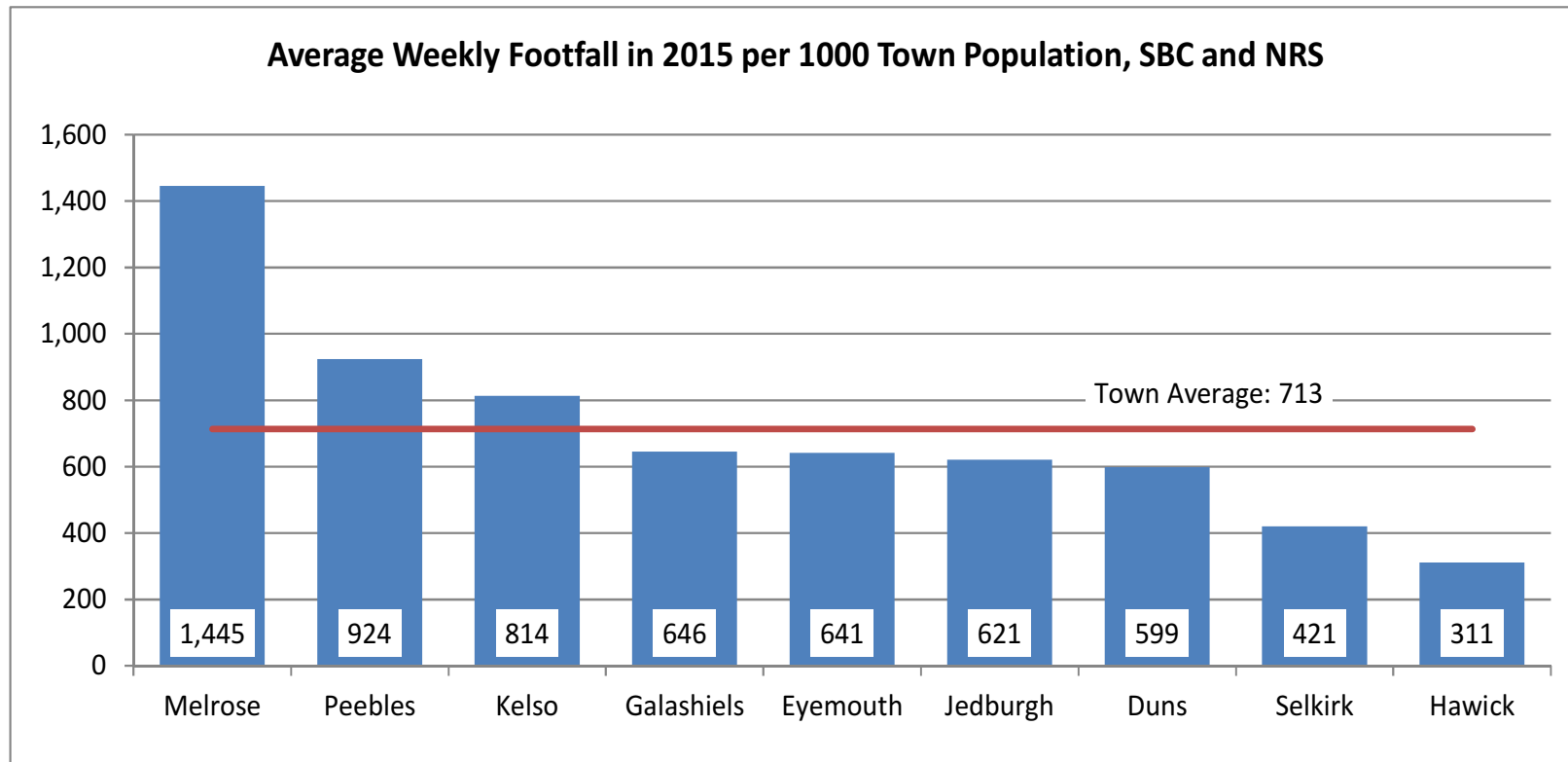


Economy and Income: Findings

TURNOVER (£ Millions) by Sector for the Scottish Borders 2010 to 2015, SG



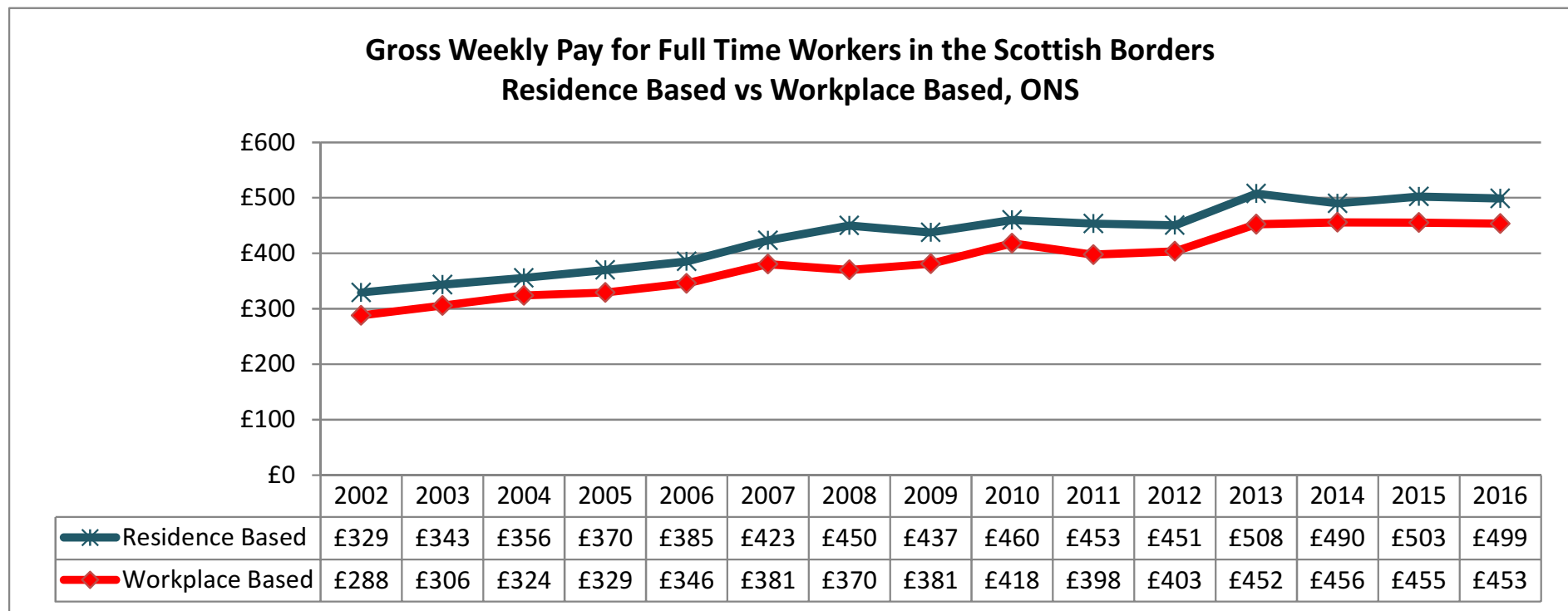
Economy and Income: Findings



- Vacancy rate in the Scottish Borders (11%) lower than the rate experienced for the United Kingdom (13%).
- Ranges from 0% to 30% in the Scottish Borders.

Economy and Income: Findings

- Gross Weekly Pay for Full Time Workers follow a similar pattern to GVA.
- Workplace Based Wages in the Scottish Borders are consistently lower than the Residence Based Wages



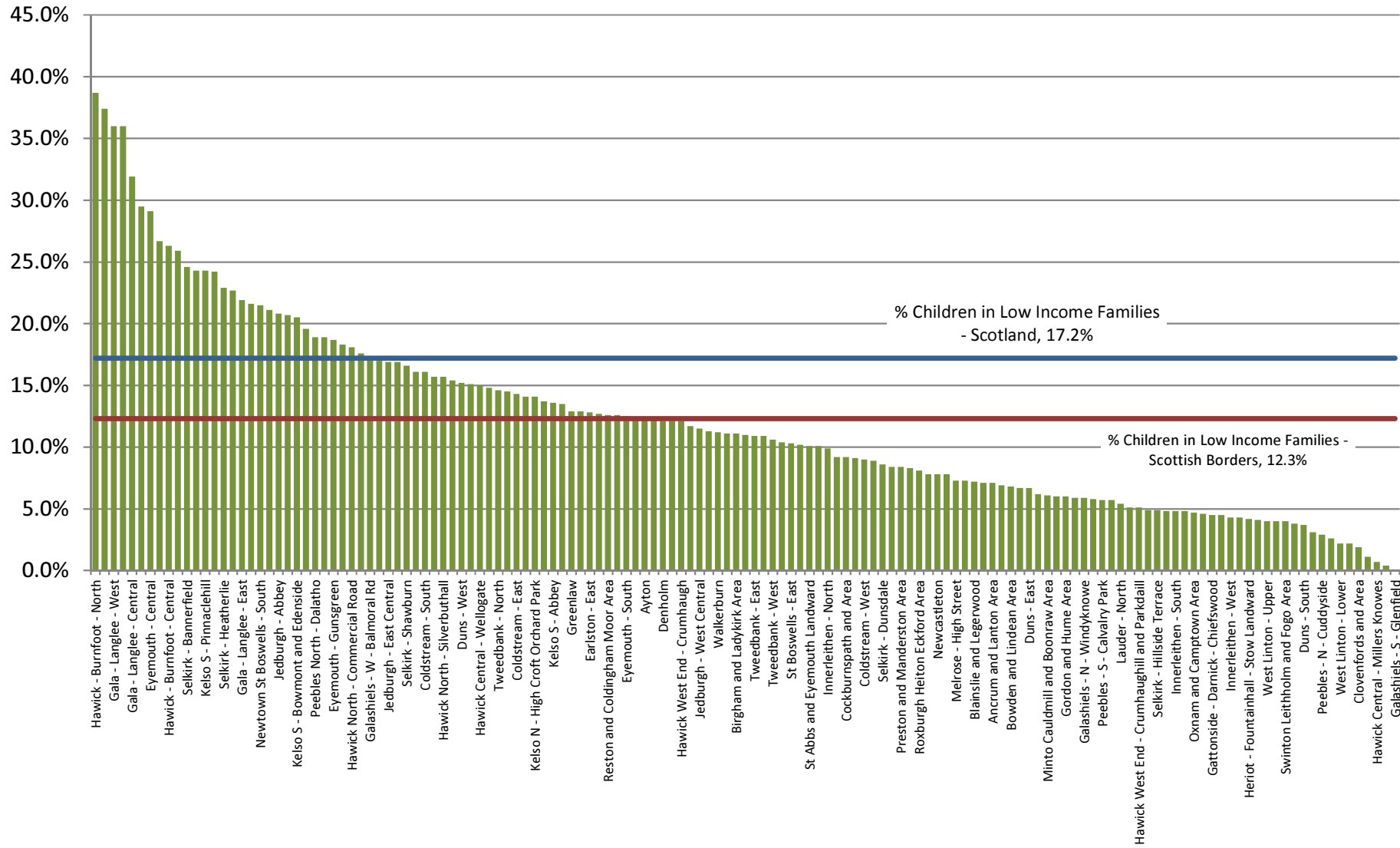
Defining Children in Low Income Families

The Children in Low-Income Families Local Measure is the proportion of children living in families either in receipt of out-of-work benefits *or* in receipt of tax credits with a reported income which is less than 60 per cent of national median income.

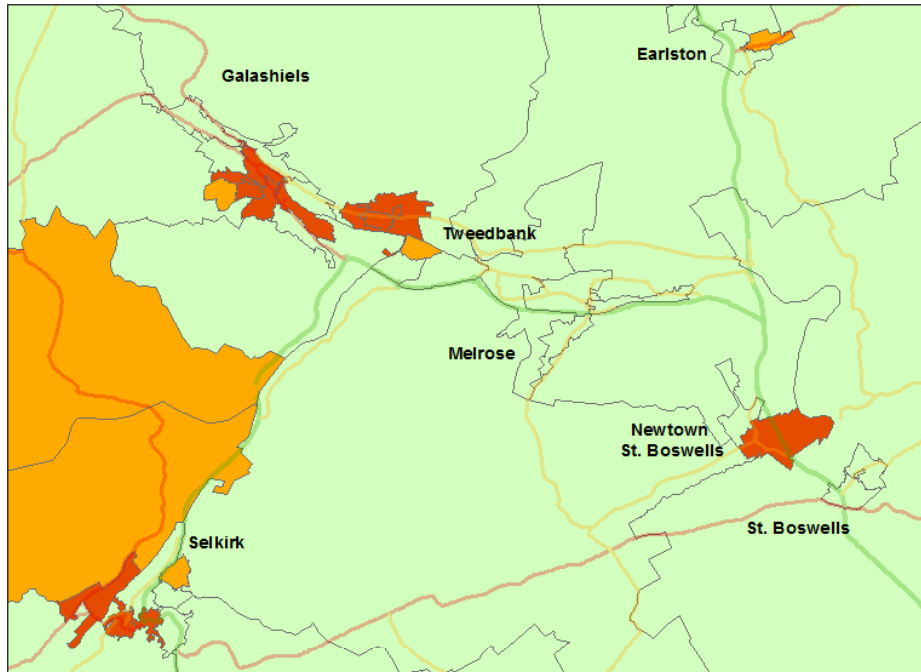
This measure provides a broad proxy for the relative low-income measure as used in the Child Poverty Act 2010 and enables analysis at a local level.

Proportion of children in low-income families	=	(a) Children living in families in receipt of out-of-work benefits	+	b) Children living in families in receipt of tax credits with income below 60% of median)
<hr/>						
c) Total number of children in the area						

% Children in Low Income Families (August 2013) for the Datazones of the Scottish Borders compared to the Scottish Borders and Scotland



Proportion of Children Living in Low Income Families (Aug 2013, HMRC)

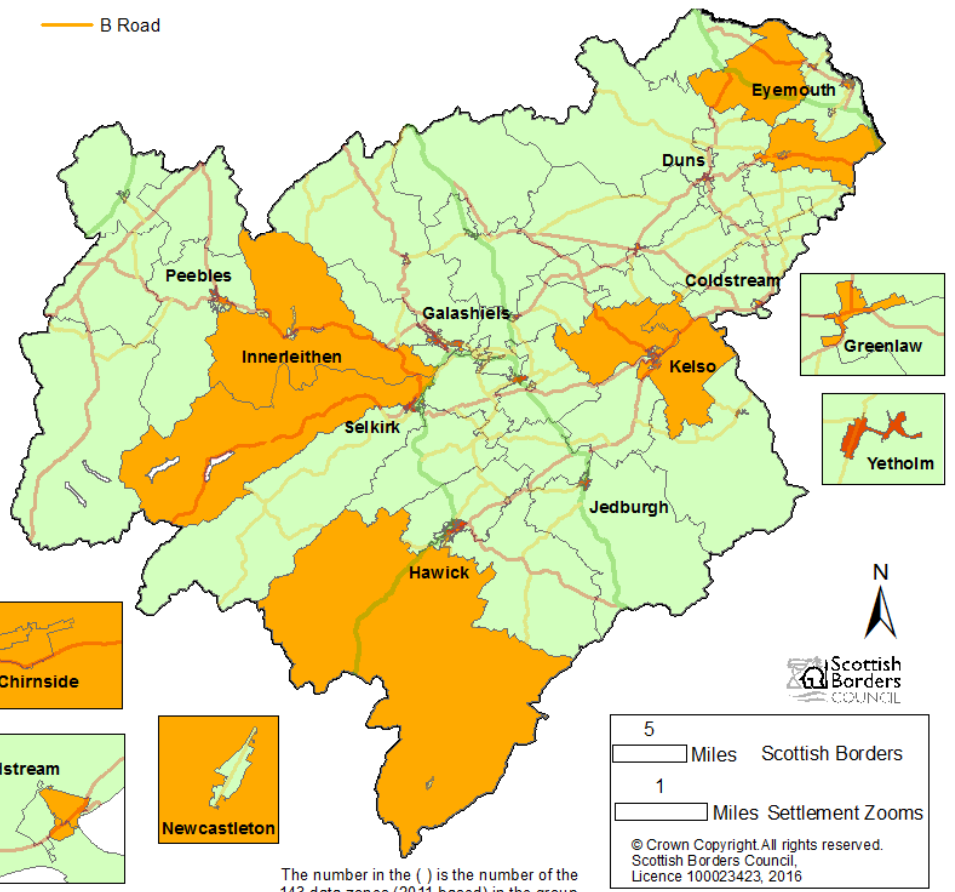
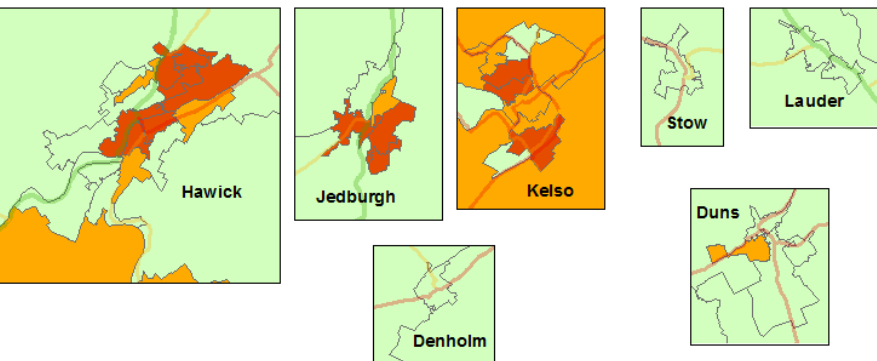
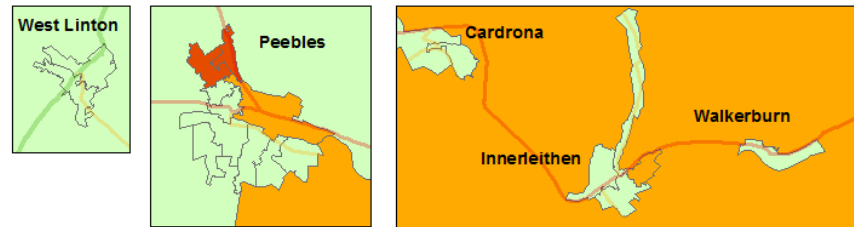
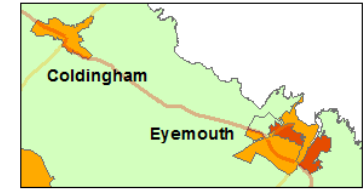




% Children in Low Income Families

- Light Green: Below Scottish Borders Level of 12.3% (84)
- Orange: Above Scottish Borders and Below Scotland Level (29)
- Dark Orange: Above the Scotland Level of 17.2% (30)

Roads

- Green line: Trunk Road
- Red line: A Road
- Orange line: B Road





 5 Miles Scottish Borders
 1 Miles Settlement Zooms
 © Crown Copyright. All rights reserved.
 Scottish Borders Council,
 Licence 100023423, 2016

The number in the () is the number of the 143 data zones (2011 based) in the group.

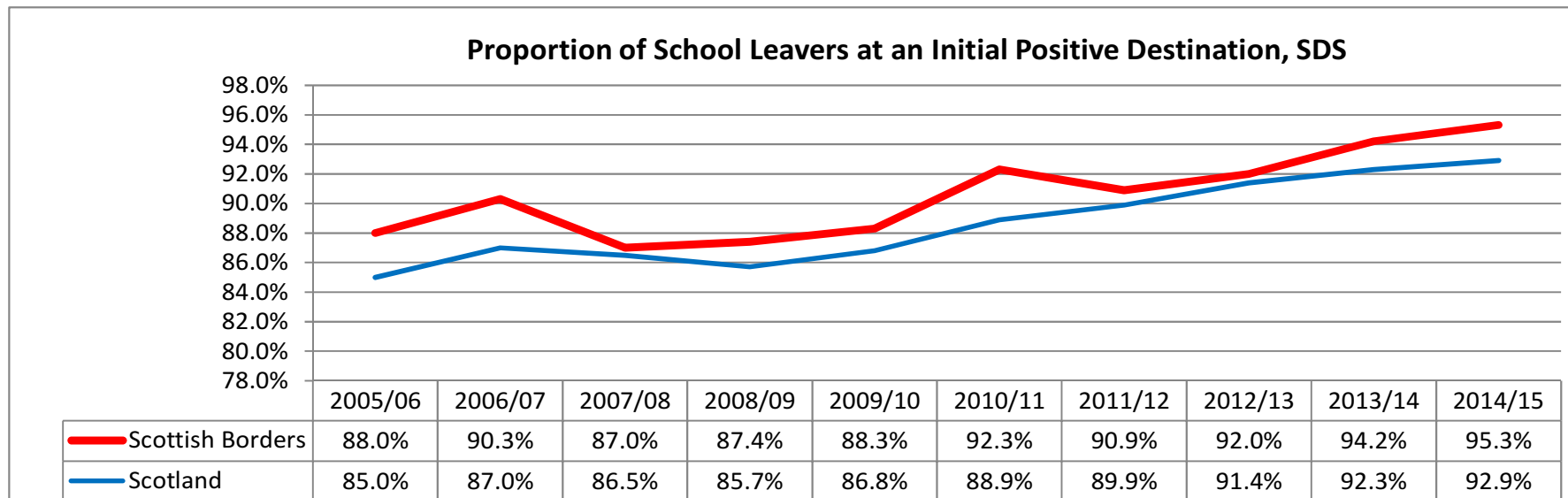
Achievement Curriculum for Excellence (CfE) Levels 2015/16

In 2015/16 the pupils of the Scottish Borders had higher levels of achievement (based on Teachers Professional Judgements) in reading, writing, listening and talking and numeracy.

Subject / Skill	Reading		Writing		Listening and Talking		Numeracy	
Stage	Scottish Borders	Scotland	Scottish Borders	Scotland	Scottish Borders	Scotland	Scottish Borders	Scotland
P1 - Early Level	86%	81%	82%	78%	87%	85%	86%	84%
P4 – First Level	81%	75%	75%	69%	86%	81%	77%	73%
P7 - Second Level	79%	72%	74%	65%	83%	77%	74%	68%
S3 - Third Level or better	97%	86%	96%	84%	97%	87%	94%	86%
S3 - Fourth Level	69%	39%	63%	37%	71%	41%	68%	49%

Education and Learning: Findings

The proportion of Scottish Borders school leavers going to an initial positive destination has increased by **7.3%** from 88% in 2005/06 to **95.3%** in 2014/15. The trend experienced in the Scottish Borders reflects the changes nationally.

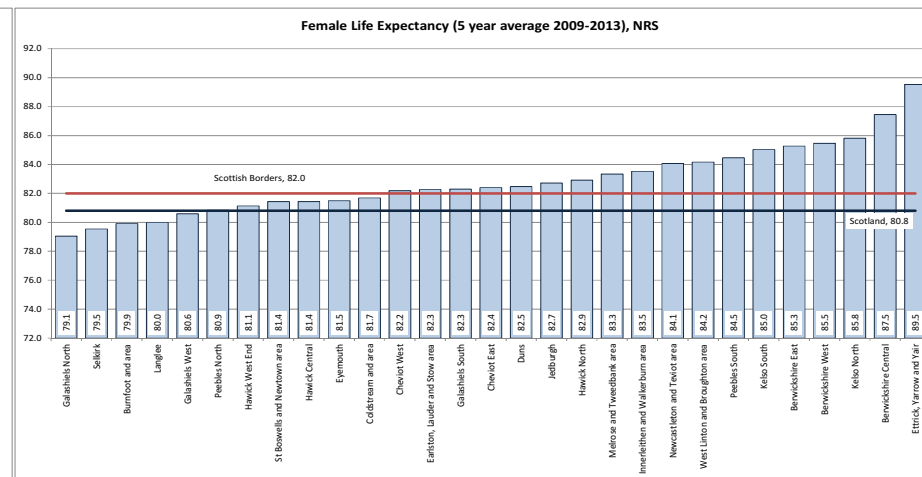
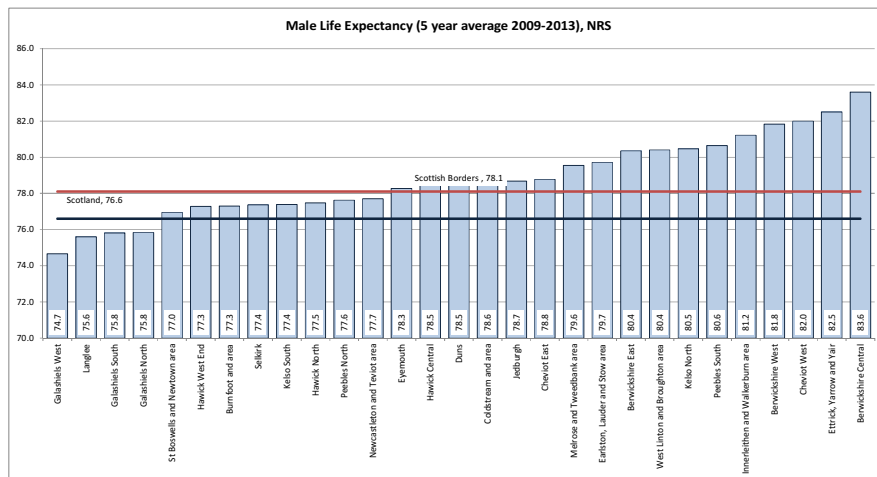
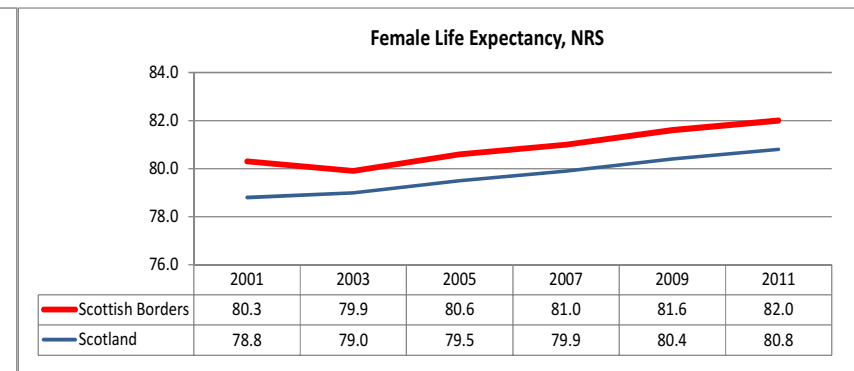
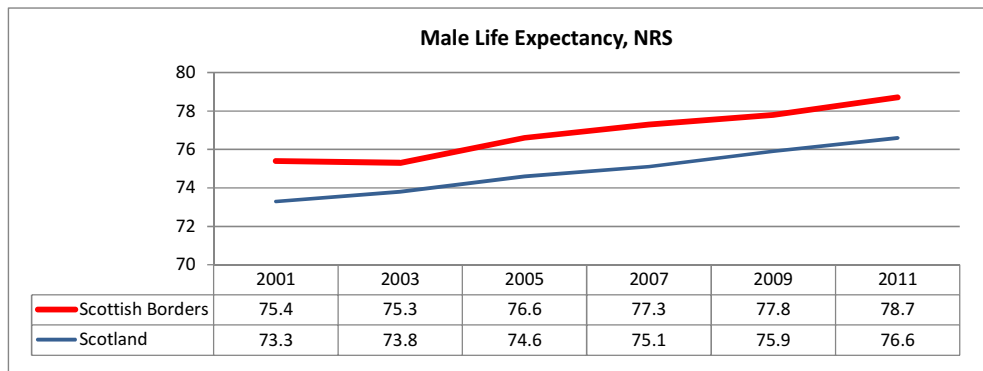


Education and Learning: Findings

- Increased full time students at Borders College
- 74% full time student success rate for 2015-16 (75% for Scotland).
- Between 2005 and 2015, the proportion of adults with no qualifications in the Scottish Borders decreased from 12% to 7%.
- In 2014 the R&D business expenditure per person for the Scottish Borders was £52, below the £169 for Scotland.

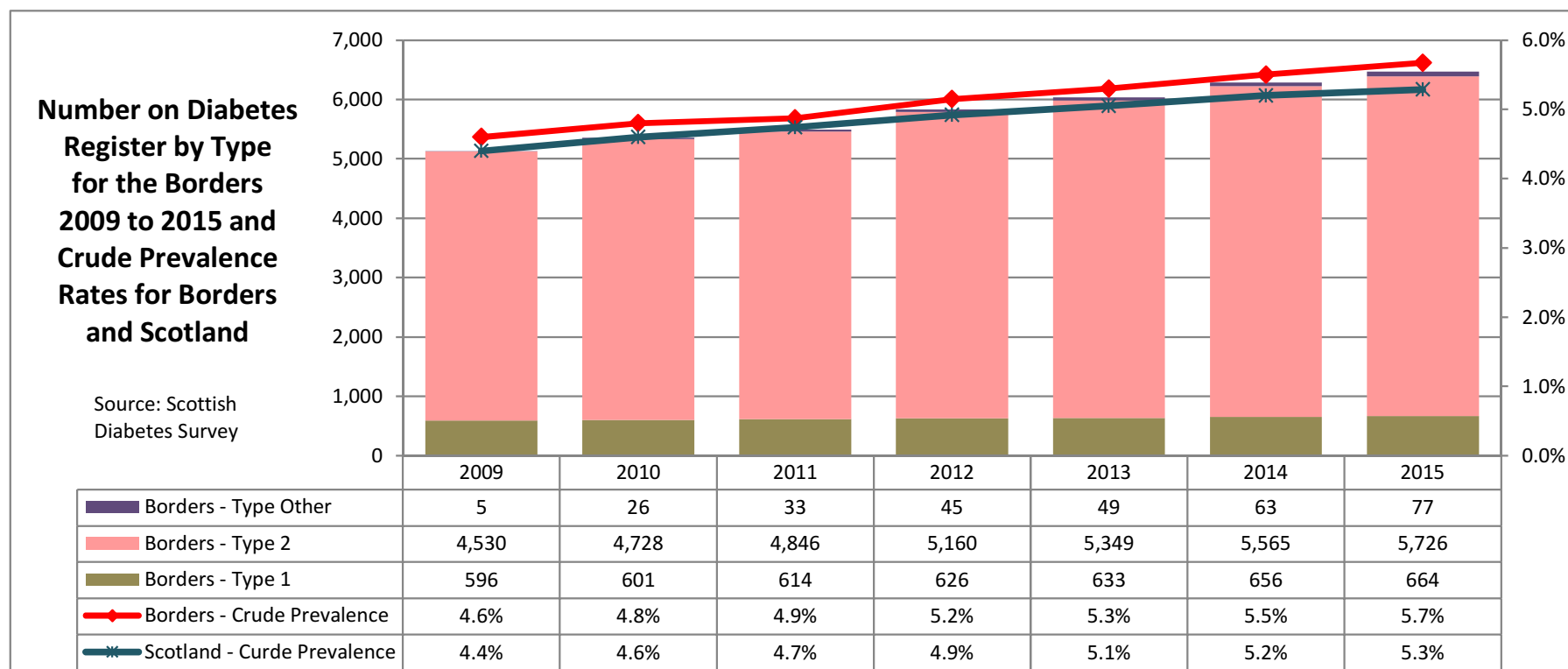
Health and Wellbeing / Demographics

- Life expectancy in the Scottish Borders higher than Scotland but within the Scottish Borders a range of 10 years for both men and women.



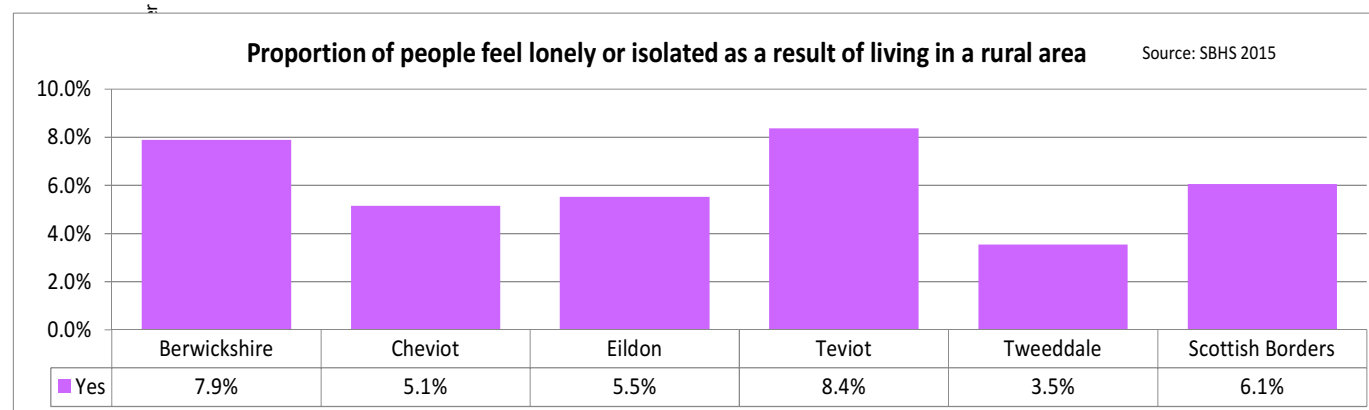
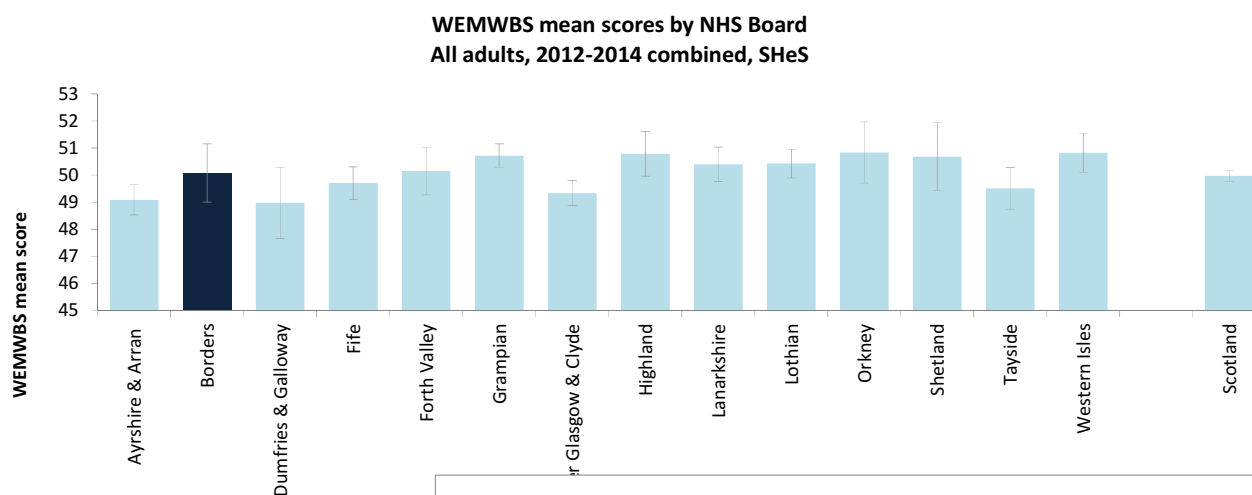
Health and Wellbeing: Findings

- In the Scottish Borders Type 2 Diabetes is the most common (5,726 of the 6.467 registrations 88.5%, Scotland = 88.3%)
- Scottish Borders slightly higher rate of diabetes



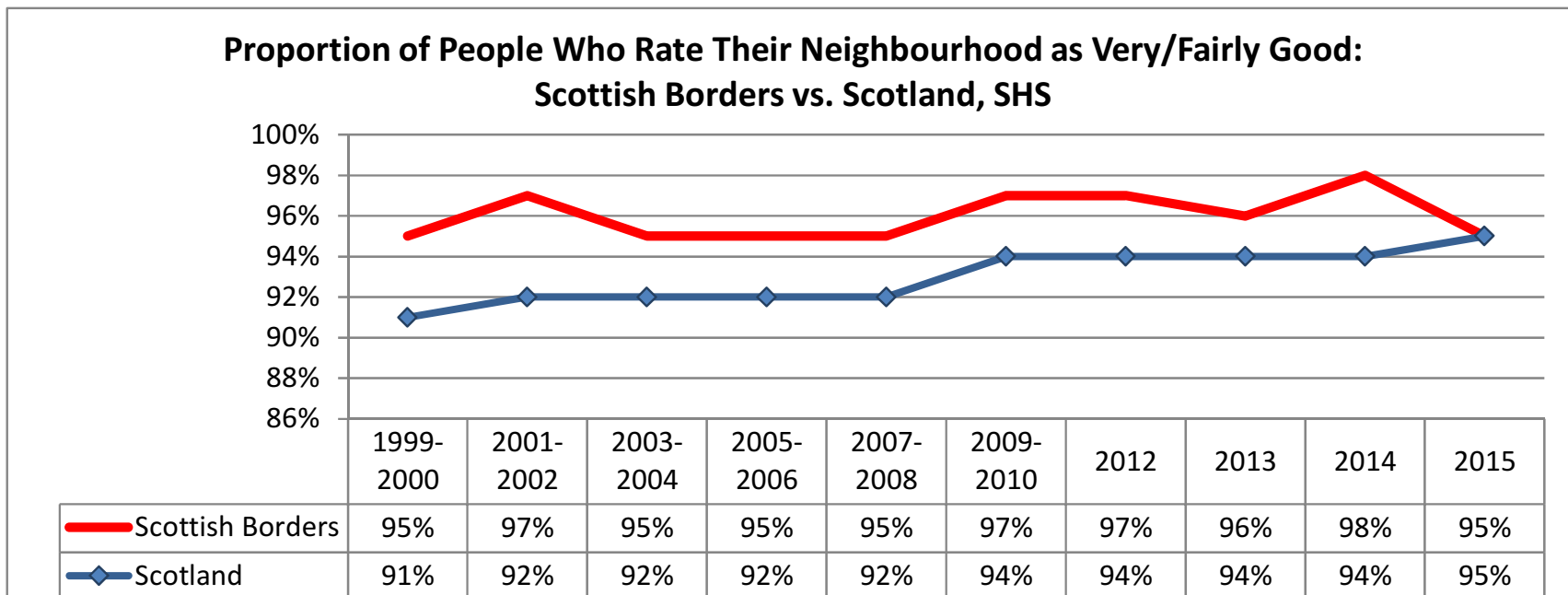
Health and Wellbeing: Findings

- Scottish Borders similar WEMWBS score to Scotland.
- People in Teviot and Berwickshire feel the most 'lonely'



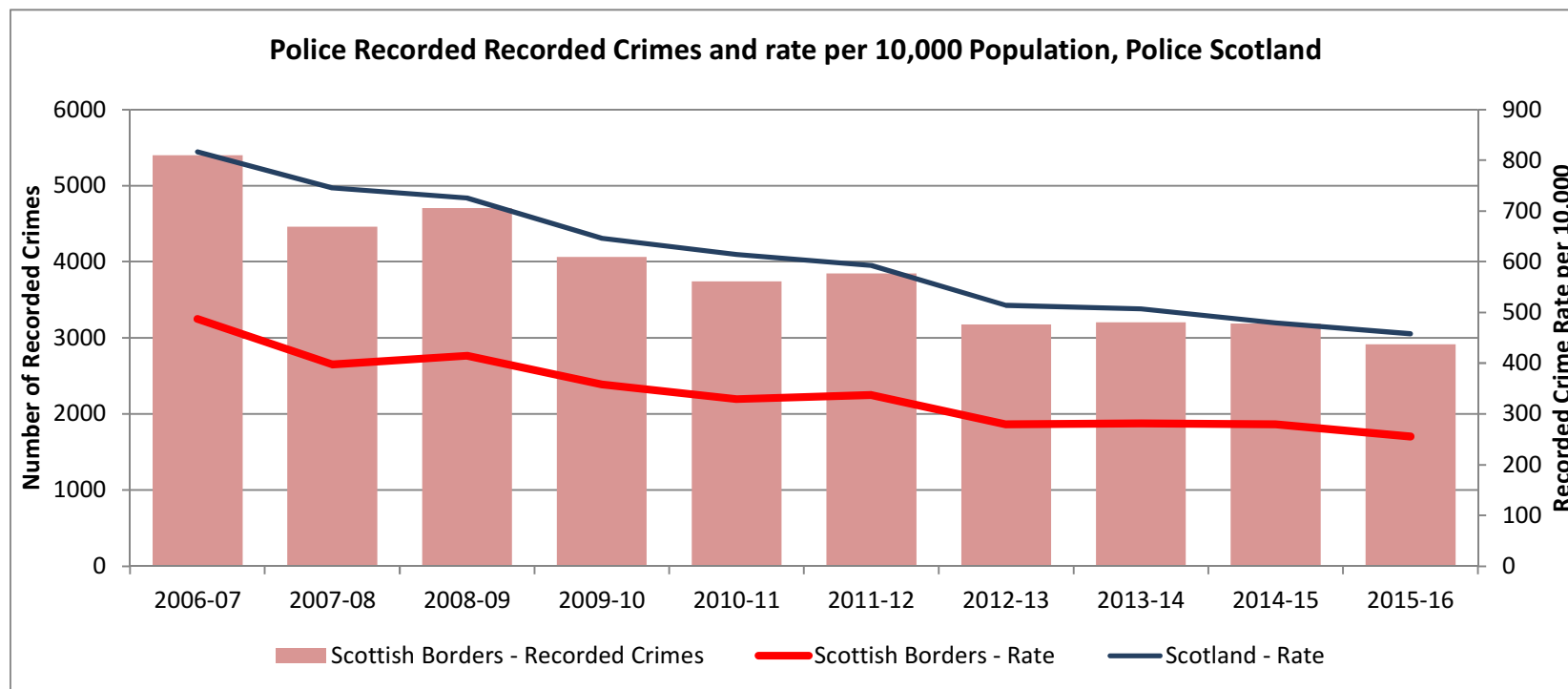
Community and Environment: Neighbourhood

- The Scottish Borders consistently had high proportion of people rating their neighbourhood as a Very Good/ Fairly Good place to live.
- The proportion of adults who volunteer in the Scottish Borders is **higher** that the level for Scotland
- The Scottish Borders has a **rich history** that is celebrated in each town by a common riding or civic festival.
- There are eight amateur operatic societies in the Scottish Borders



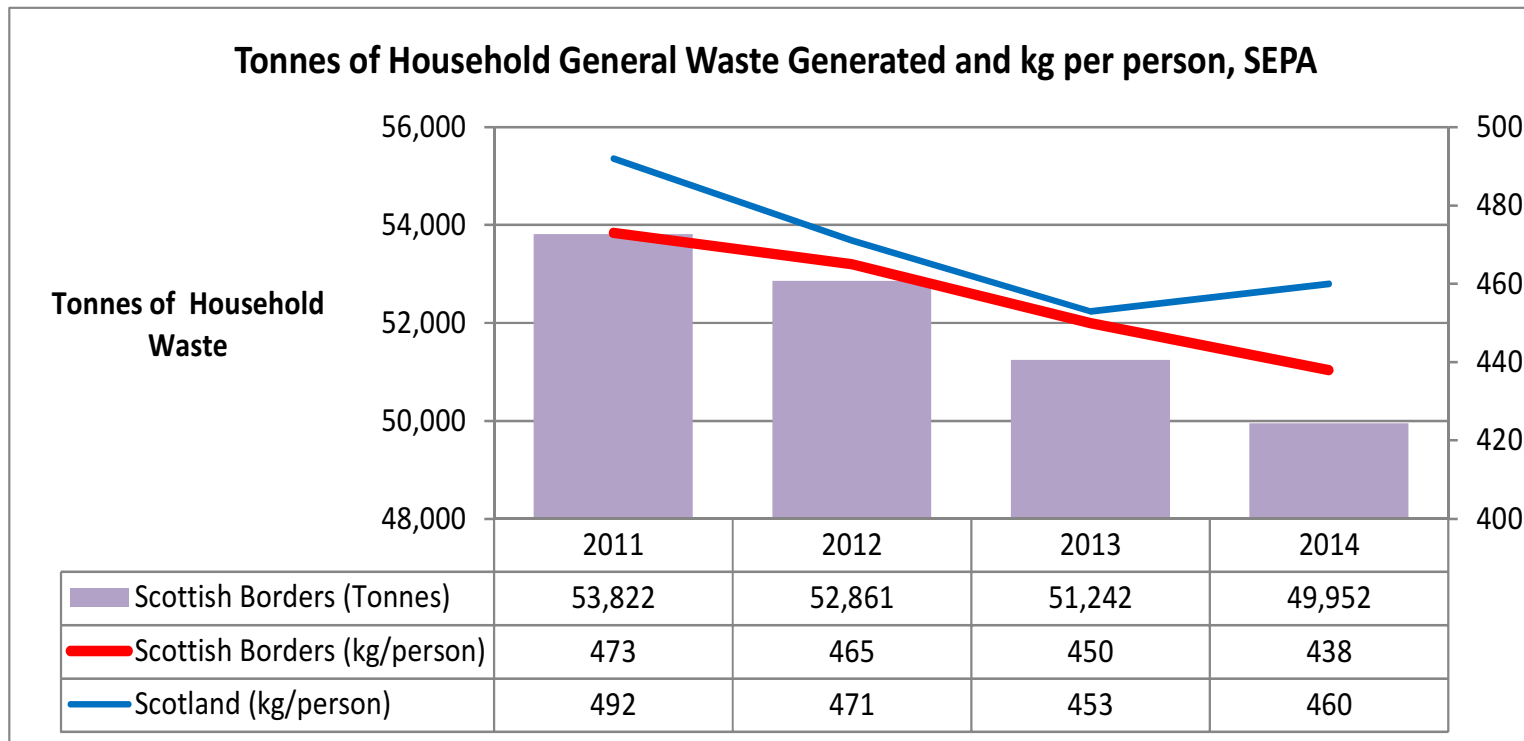
Community and Environment: Safety

- The Scottish Borders is a safe place to live with low levels of crime and anti-social behaviour and a low number of fire casualties compared to Scotland.
- More people are killed or seriously injured resulting from of a road traffic accident in the Scottish Borders compared to the Scottish average.



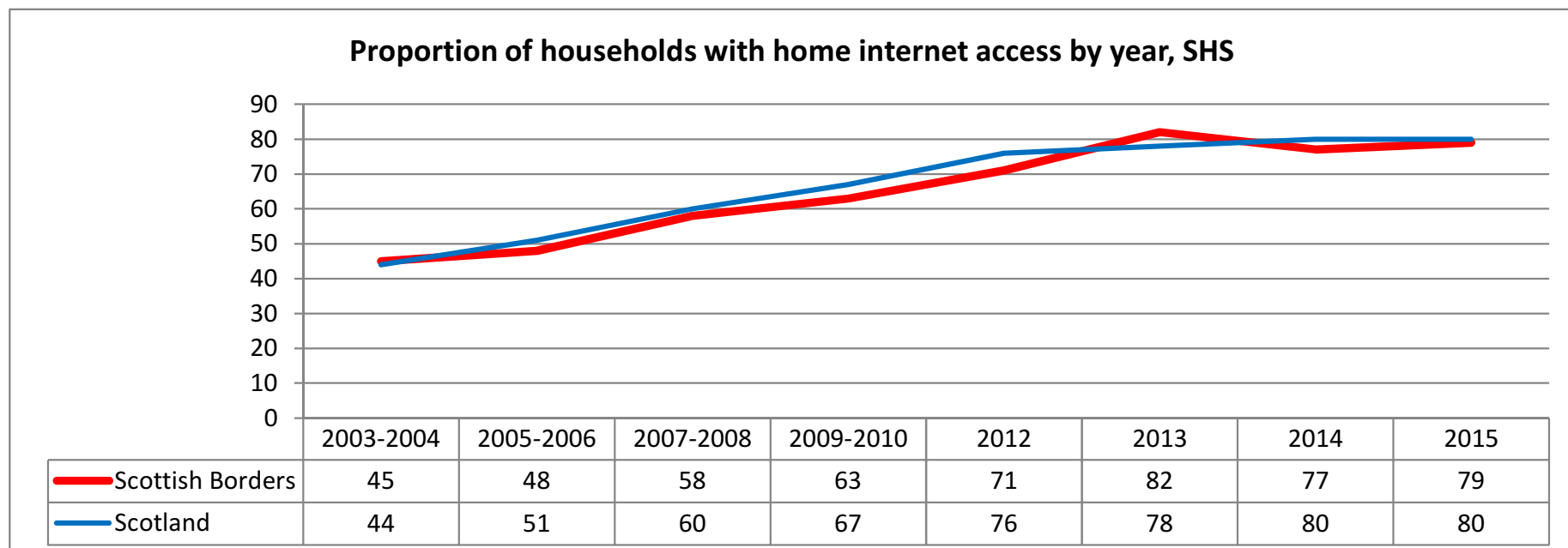
Community and Environment: Waste

- Total Tonnes of Household Waste decreased by 7.2% between 2011 and 2014 (Scotland decrease 5.6%)
- The Scottish Borders Household Survey 2015 showed a similar result with 77.4% of respondents being 'Very Satisfied/ Fairly Satisfied' with the kerbside waste and recycling collection.



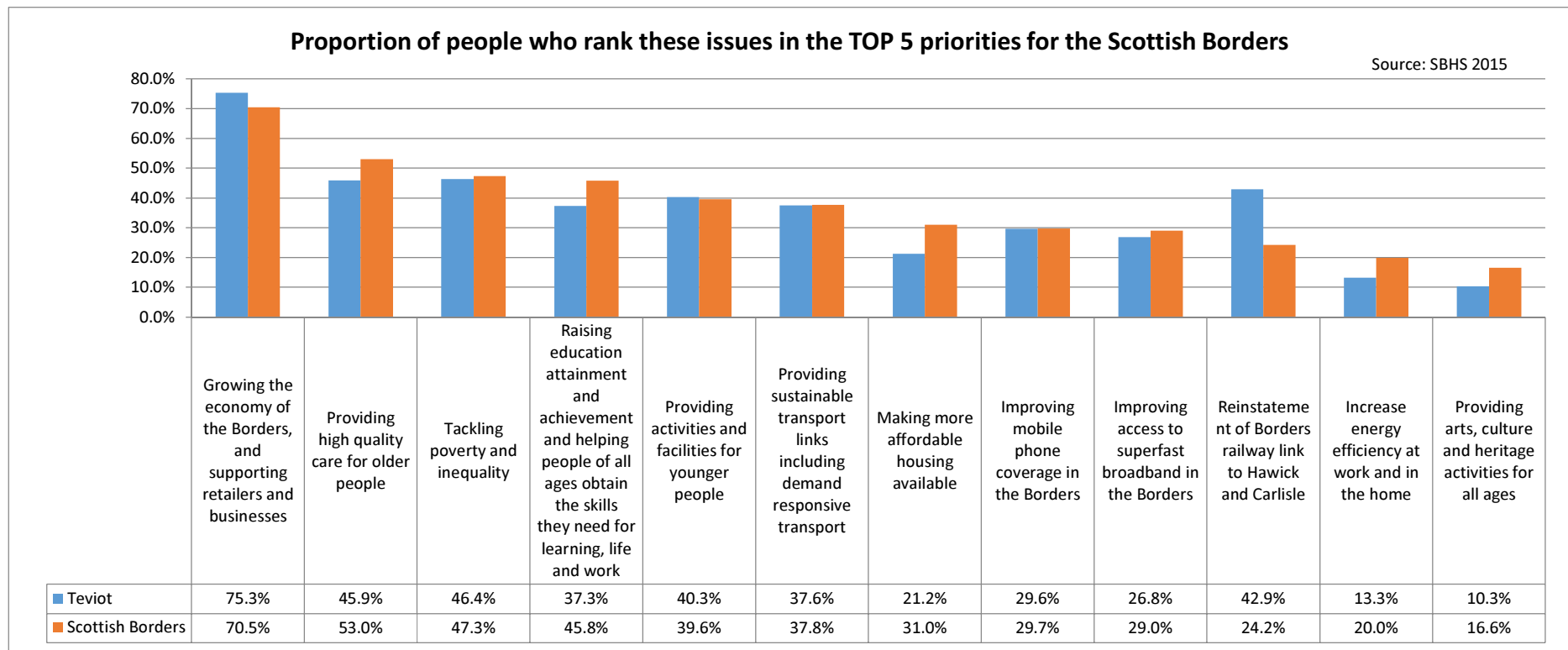
Community and Environment: Access

- Over 20% of the households in the Scottish Borders do not have access to a car or van.
- The Scottish Borders Household Survey reported that over 16% of people reported accessibility issues with public transport.
- The Scottish Borders Household Survey reported that almost 15% do not use the internet or email.



Public Services: Findings

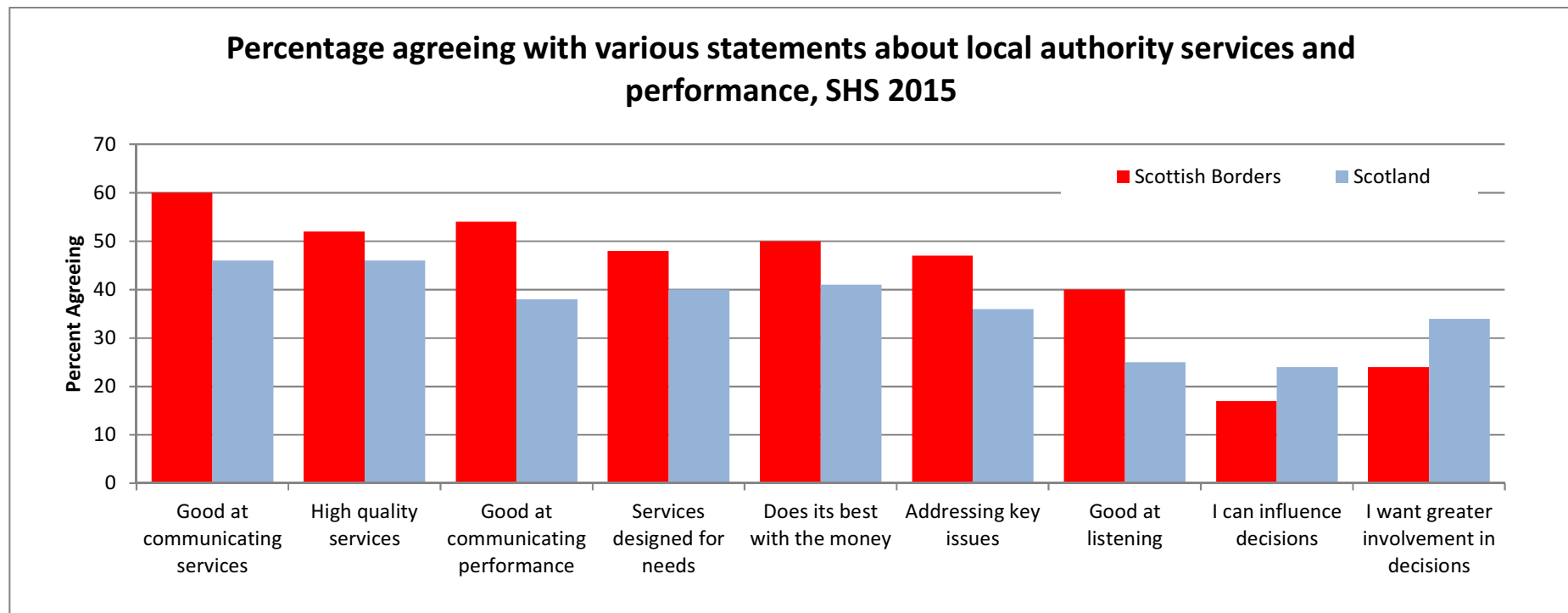
- Over 70% say ‘growing the economy of the Borders, and supporting retailers and businesses’ as a top 5 priority.
- Other top: ‘providing high quality care for older people’ and ‘tackling poverty and inequality’.



Public Services: Findings

The Scottish Household Survey (SHS) asks various statements about local authority services. The graph below shows the 2015 results for the Scottish Borders and Scotland. Over 50% of the Scottish Borders respondents agreed with the following statements:

- Good at communicating services
- High quality services
- Good at communicating performance
- Does its best with the money



Find the Teviot and Liddesdale Area
Strategic Assessment Extract at:

[https://www.scotborders.gov.uk/downloads/download/211/strategic assessment](https://www.scotborders.gov.uk/downloads/download/211/strategic_assessment)